

# Embracing Change Through Unfortunate Events to Achieve Success

---

SAM JOHNSON

Mayor

Wednesday, 23 May 2018



**Port Augusta**

CITY COUNCIL

# Power Station Closure

# The Advertiser

## 400 jobs face axe Leigh Creek coal mine, two electricity plants set to go

**HAVE YOU GOT A NEWS TIP?**  
Email your tip to: [news@theadvertiser.com.au](mailto:news@theadvertiser.com.au)

**OR TAKEN A GREAT PHOTO OR VIDEO?**  
Email your photo or video to: [photos@theadvertiser.com.au](mailto:photos@theadvertiser.com.au)

**CONTENTS**

NEWS 14  
SPORTS 17  
LEIGH CREEK 18  
PORT AUGUSTA 20  
LEIGH CREEK 21  
LEIGH CREEK 22  
LEIGH CREEK 23  
LEIGH CREEK 24  
LEIGH CREEK 25  
LEIGH CREEK 26  
LEIGH CREEK 27  
LEIGH CREEK 28  
LEIGH CREEK 29  
LEIGH CREEK 30  
LEIGH CREEK 31  
LEIGH CREEK 32  
LEIGH CREEK 33  
LEIGH CREEK 34  
LEIGH CREEK 35  
LEIGH CREEK 36  
LEIGH CREEK 37  
LEIGH CREEK 38  
LEIGH CREEK 39  
LEIGH CREEK 40

**6Z LOTTO**

TRAWL NO. 112

15	22	7
24	16	9
38	30	21

**CONTACT**

Subscription: 0800 131 112  
 Tel: 0800 131 112  
 Fax: 0800 131 112  
 Email: [subscriptions@theadvertiser.com.au](mailto:subscriptions@theadvertiser.com.au)  
 Website: [theadvertiser.com.au](http://theadvertiser.com.au)

**ADVERTISING**

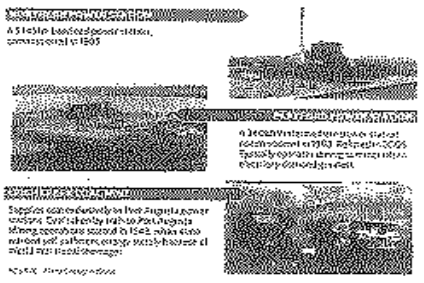
0800 131 112  
 Tel: 0800 131 112  
 Fax: 0800 131 112  
 Email: [advertising@theadvertiser.com.au](mailto:advertising@theadvertiser.com.au)  
 Website: [theadvertiser.com.au](http://theadvertiser.com.au)

The Leigh Creek mine, an essential 201m mine to Port Augusta and the mining hub of the state, will close in 2014, says the state government.

The two power stations, owned by a consortium of the state government and Leigh Creek, have provided jobs for 400 people in the Port Augusta area.

### PORT AUGUSTA POWER STATIONS

Port Augusta Power Stations, owned by Leigh Creek, will close in 2014, says the state government.



Aerial view of the Leigh Creek coal mine and power stations.

Leigh Creek's closure will end more than 20 years of coal mining in the area, which started in 1911 when the mine was first opened to develop a railway line to the port.

Joe Buckley, who said his farm was the first to be sold in the area, said the closure was a blow to the community.

The Port Augusta plant, which was constructed in 1972, will be closed in 2014.

Be quick for Joe's farm

The Leigh Creek mine, an essential 201m mine to Port Augusta and the mining hub of the state, will close in 2014, says the state government.

Cancer deception charge

Port Augusta Power Stations, owned by Leigh Creek, will close in 2014, says the state government.

The Leigh Creek mine, an essential 201m mine to Port Augusta and the mining hub of the state, will close in 2014, says the state government.

Port Augusta Power Stations, owned by Leigh Creek, will close in 2014, says the state government.

Cancer deception charge

### Strike to put trams off tracks

Port Augusta Power Stations, owned by Leigh Creek, will close in 2014, says the state government.

### Holes in tests for safe food

Port Augusta Power Stations, owned by Leigh Creek, will close in 2014, says the state government.

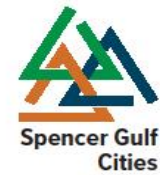
# Embracing Change



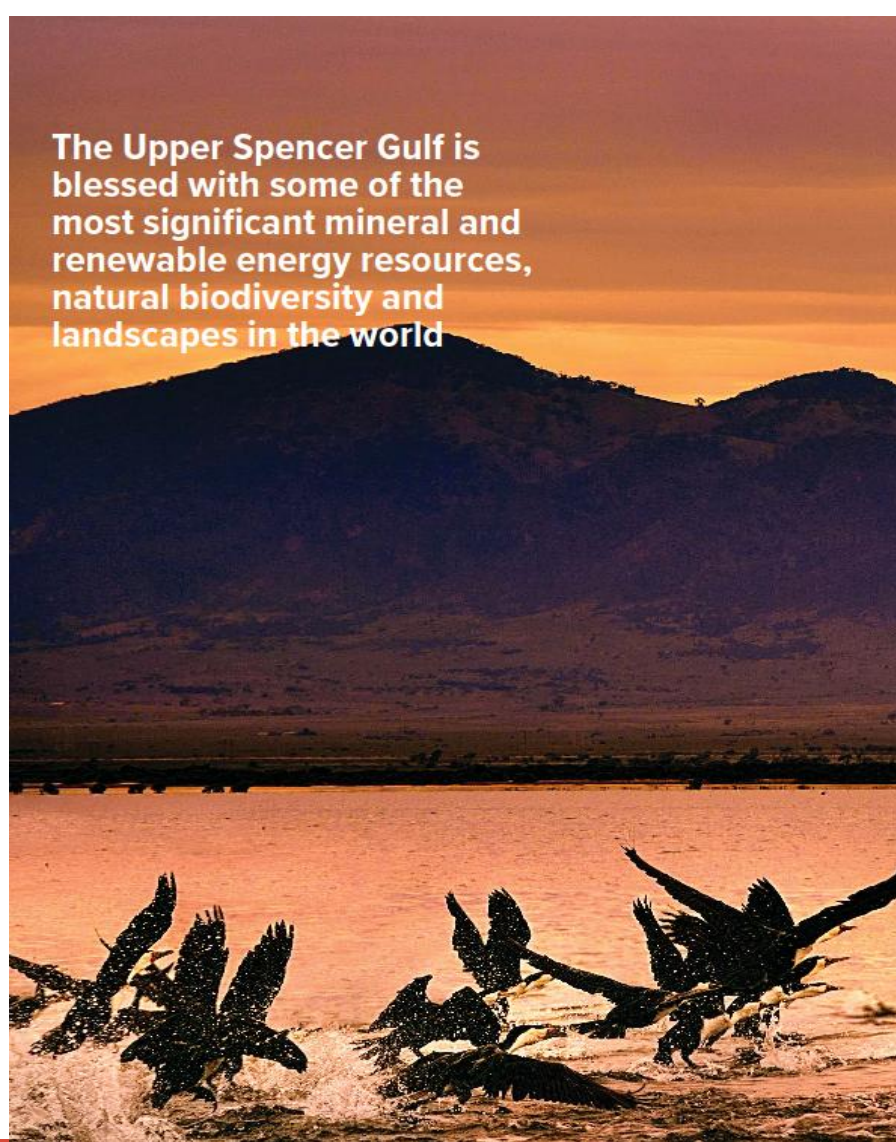
## Transforming the Upper Spencer Gulf

Sustainability | Innovation | Liveability

Prepared by the Upper Spencer Gulf  
Common Purpose Group



The Upper Spencer Gulf is  
blessed with some of the  
most significant mineral and  
renewable energy resources,  
natural biodiversity and  
landscapes in the world



# Regional Transport Infrastructure Plan

## Regional Transport Infrastructure Plan

Whyalla – Port Pirie – Port Augusta

February 2018



Upper Spencer Gulf Common Purpose  
Group

**AECOM** imagine it.  
Delivered.

# Port Augusta Strategic Tourism Development Plan



# Senate Inquiry Submission – Power Station Ash Dam

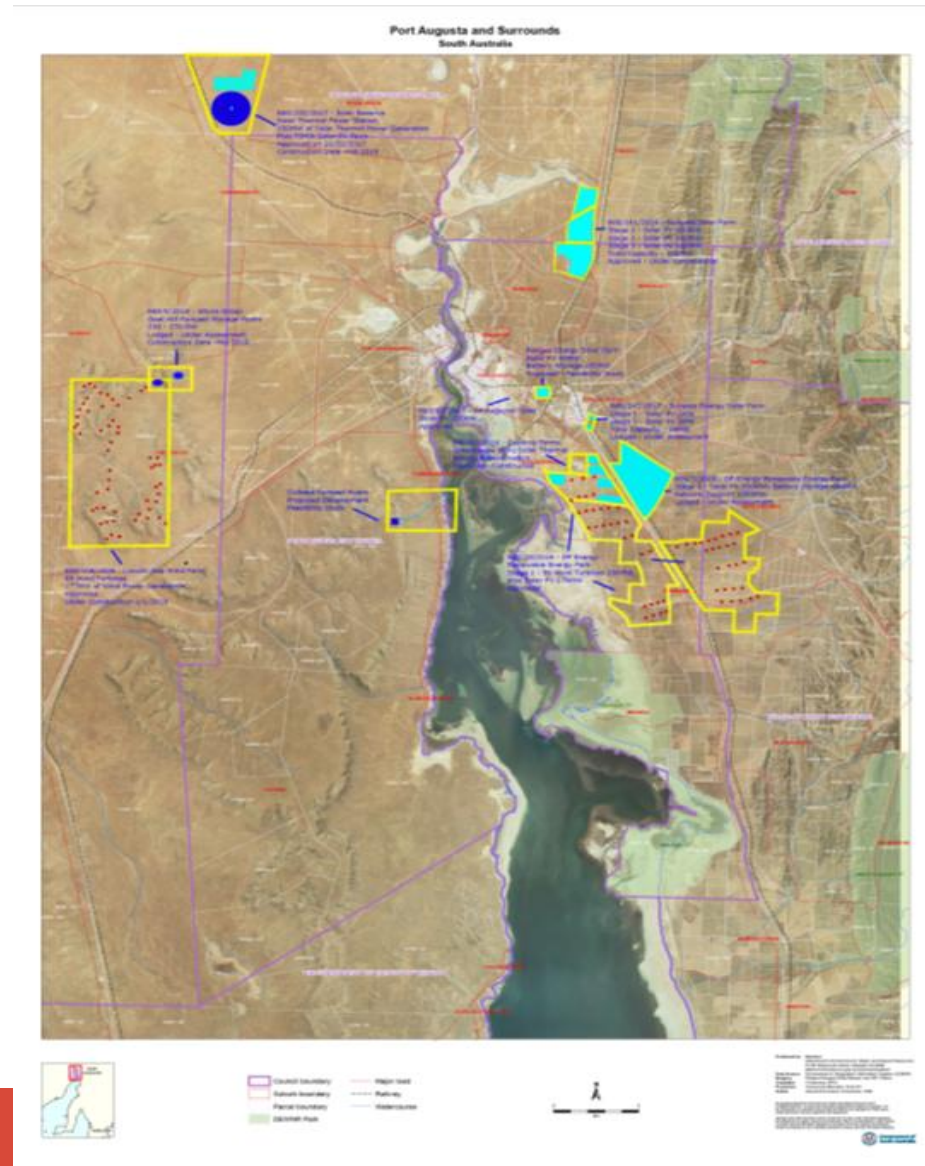








# Renewable Energy Projects



# Renewable Energy Projects

Company	Project Title	Details	Location
SolarReserve	Aurora Solar Energy Project	150 MW solar thermal tower with energy storage	30km North of Port Augusta
Altura Group	Goat Hill Pumped Storage Hydro Project	Closed Loop, off-river pumped hydro Mains Network – Morgan/Whyalla pipeline (potable quality)	Lincoln Gap
Arup/Energy Australia	Cultana Seawater Pumped Hydro Project	Pumped Hydro Energy Storage Facility	Shack Road
Reach Solar Energy	Bungala Solar Reserve Project	300MWac Solar Photovoltaic (PV) Project	On land leased from Bungala Aboriginal Corporation 12km from Port Augusta (Emeroo Station)
DP Energy	Port Augusta Renewable Energy Park	<p>Stage 1 - Combined wind &amp; solar photovoltaic (PV) farm. 59 Wind Turbines &amp; a series of Molar Modules, together with associated infrastructure to produce a total installed capacity of up to 375MW of clean renewable energy.</p> <p>Stage 2 - Solar PV Farm including Energy Storage &amp; Synchronous Condenser facilities. 5,000,000 solar PV modules, 500 solar PV inverter, up to 400MW of energy storage, up to 3000MW.s of synchronous condenser capacity facilities.</p>	12km South-East Port Augusta
Pangea Energy Pty Ltd	Pangea Project	50MW Solar Photovoltaic capacity and up to 300Mwh Battery Storage capacity	Lot 350 Paltridge Avenue Stirling North

# Renewable Energy Projects

Alinta Energy & Trustpower Consortium	Solar PV Renewable Energy Project	Solar PV Power Plant	Port Augusta Power Station Site
ZEN Energy & Santos Partnership	Large Scale Battery Storage Project	Solar and battery storage with natural gas-based generation	
Nexif Energy	Lincoln Gap Wind Farm	Wind Farm - 59 Senvion Wind Turbines 212 Megawatt Next phase: 10MW Grid Scale Battery Storage	15km west of Port Augusta Lincoln Gap
Solastor	Solastor	Concentrated Solar Power & Storage Utilising Graphite Technology	
Surpass Energy Pty Ltd (trading as SSE Australia)	Woolundunga Solar Farm Pty Ltd	Stage 1 – Fixed Tilt Solar Photovoltaic (PV) Farm of 5MW Capacity	Spear Creek Road
Scatec Solar (Norway) & Climate Mundial (UK/Australia)	Wilpena Solar Project	Large (500+MW) Scale Solar Photovoltaic (PV) Plant across the South Australia.	Wilpena
SIMEC ZEN Eerngy		120MW/140MWh Battery Storage Facility	