

# Embracing Change Through Unfortunate Events to Achieve Success

---

SAM JOHNSON

Mayor

Wednesday, 23 May 2018



**Port Augusta**

CITY COUNCIL

# Power Station Closure

# The Advertiser

**HAVE YOU GOT A NEWS TIP?**  
Send it to us and we'll pay you for it.

**OR TAKEN A GREAT PHOTO OR VIDEO?**  
Send it to us and we'll pay you for it.

## 400 jobs face axe

### Leigh Creek coal mine, two electricity plants set to go

**PORT AUGUSTA POWER STATIONS**

The Leigh Creek mine, an essential 201m mine in Port Augusta, and the ageing Wauchope and Blighfield coal-fired power plants are set to close.

The two power stations, owned and operated by the state-owned government, will provide 400 jobs. The Leigh Creek mine, owned by the state-owned government, will provide 200 jobs. The Wauchope and Blighfield power plants, owned by the state-owned government, will provide 200 jobs.

The closure of the Leigh Creek mine and the Wauchope and Blighfield power plants is part of a broader strategy to reduce the state's carbon footprint and improve its energy efficiency. The state government has announced that it will invest in renewable energy sources, such as wind and solar power, to replace the coal-fired power plants.

The closure of the Leigh Creek mine and the Wauchope and Blighfield power plants is expected to be completed by the end of 2015. The state government has announced that it will provide support for the workers affected by the closure, including retraining and job placement assistance.

## Strike to put trams off tracks

**LAUNCEY POWER POLITICAL BARRIERS**

The Launcey power plant is set to be closed by the end of 2015. The closure of the plant is part of a broader strategy to reduce the state's carbon footprint and improve its energy efficiency. The state government has announced that it will invest in renewable energy sources, such as wind and solar power, to replace the coal-fired power plants.

The closure of the Launcey power plant is expected to be completed by the end of 2015. The state government has announced that it will provide support for the workers affected by the closure, including retraining and job placement assistance.

**CONTENTS**

NEWS 10  
SPORTS 11  
LOCAL 12  
NATIONAL 13  
INTERNATIONAL 14  
BUSINESS 15  
TECHNOLOGY 16  
ENTERTAINMENT 17  
LIFESTYLE 18  
OPINION 19  
COLUMNS 20  
LEIGH CREEK 21  
PORT AUGUSTA 22  
LAUNCEY 23  
MOUNT GAMMA 24  
MOUNT MERRILL 25  
MOUNT RICHMOND 26  
MOUNT SADDON 27  
MOUNT SHERIDAN 28  
MOUNT SULLIVAN 29  
MOUNT WATSON 30  
MOUNT WOODS 31  
MOUNT WYNDHAM 32  
MOUNT YARBRO 33  
MOUNT ZENITH 34  
MOUNT ZEPHYRUS 35  
MOUNT ZION 36  
MOUNT ZION 37  
MOUNT ZION 38  
MOUNT ZION 39  
MOUNT ZION 40  
MOUNT ZION 41  
MOUNT ZION 42  
MOUNT ZION 43  
MOUNT ZION 44  
MOUNT ZION 45  
MOUNT ZION 46  
MOUNT ZION 47  
MOUNT ZION 48  
MOUNT ZION 49  
MOUNT ZION 50  
MOUNT ZION 51  
MOUNT ZION 52  
MOUNT ZION 53  
MOUNT ZION 54  
MOUNT ZION 55  
MOUNT ZION 56  
MOUNT ZION 57  
MOUNT ZION 58  
MOUNT ZION 59  
MOUNT ZION 60  
MOUNT ZION 61  
MOUNT ZION 62  
MOUNT ZION 63  
MOUNT ZION 64  
MOUNT ZION 65  
MOUNT ZION 66  
MOUNT ZION 67  
MOUNT ZION 68  
MOUNT ZION 69  
MOUNT ZION 70  
MOUNT ZION 71  
MOUNT ZION 72  
MOUNT ZION 73  
MOUNT ZION 74  
MOUNT ZION 75  
MOUNT ZION 76  
MOUNT ZION 77  
MOUNT ZION 78  
MOUNT ZION 79  
MOUNT ZION 80  
MOUNT ZION 81  
MOUNT ZION 82  
MOUNT ZION 83  
MOUNT ZION 84  
MOUNT ZION 85  
MOUNT ZION 86  
MOUNT ZION 87  
MOUNT ZION 88  
MOUNT ZION 89  
MOUNT ZION 90  
MOUNT ZION 91  
MOUNT ZION 92  
MOUNT ZION 93  
MOUNT ZION 94  
MOUNT ZION 95  
MOUNT ZION 96  
MOUNT ZION 97  
MOUNT ZION 98  
MOUNT ZION 99  
MOUNT ZION 100

**5Z LOTTO**

**TRAWL NO. 112**

15	22	7
24	16	9
18	30	21

REWARDS: \$100,000  
\$10,000  
\$1,000  
\$500  
\$200  
\$100  
\$50  
\$20  
\$10  
\$5  
\$2  
\$1

**CONTACT**

Phone: 08 9422 1111  
Fax: 08 9422 1112  
Email: [advertiser@portadvertiser.com.au](mailto:advertiser@portadvertiser.com.au)  
Website: [www.portadvertiser.com.au](http://www.portadvertiser.com.au)

**Be quick for Joe's farm**

Joe's farm is a beautiful property with a large house, swimming pool, and tennis court. It is located in a quiet area with views of the ocean. Call now to view the property.

**Be quick for Joe's farm**

Joe's farm is a beautiful property with a large house, swimming pool, and tennis court. It is located in a quiet area with views of the ocean. Call now to view the property.

**Cancer deception charge**

A woman has been charged with deception after she was found to have sold cancer treatment to a man who had been diagnosed with cancer. The woman is accused of telling the man that she had a cure for his cancer, which was not true.

**Holes in tests for safe food**

There are significant holes in the tests used to ensure that food is safe to eat. A study has found that many of the tests used to detect foodborne pathogens are unreliable and can give false results.

**Strike to put trams off tracks**

The Launcey power plant is set to be closed by the end of 2015. The closure of the plant is part of a broader strategy to reduce the state's carbon footprint and improve its energy efficiency. The state government has announced that it will invest in renewable energy sources, such as wind and solar power, to replace the coal-fired power plants.

**Strike to put trams off tracks**

The Launcey power plant is set to be closed by the end of 2015. The closure of the plant is part of a broader strategy to reduce the state's carbon footprint and improve its energy efficiency. The state government has announced that it will invest in renewable energy sources, such as wind and solar power, to replace the coal-fired power plants.

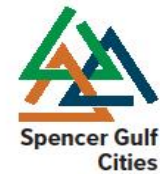
# Embracing Change



## Transforming the Upper Spencer Gulf

Sustainability | Innovation | Liveability

Prepared by the Upper Spencer Gulf  
Common Purpose Group



The Upper Spencer Gulf is  
blessed with some of the  
most significant mineral and  
renewable energy resources,  
natural biodiversity and  
landscapes in the world





# Regional Transport Infrastructure Plan

## Regional Transport Infrastructure Plan

Whyalla – Port Pirie – Port Augusta

February 2018



Upper Spencer Gulf Common Purpose  
Group

**AECOM** imagine it.  
Delivered.

# Port Augusta Strategic Tourism Development Plan



# Senate Inquiry Submission – Power Station Ash Dam



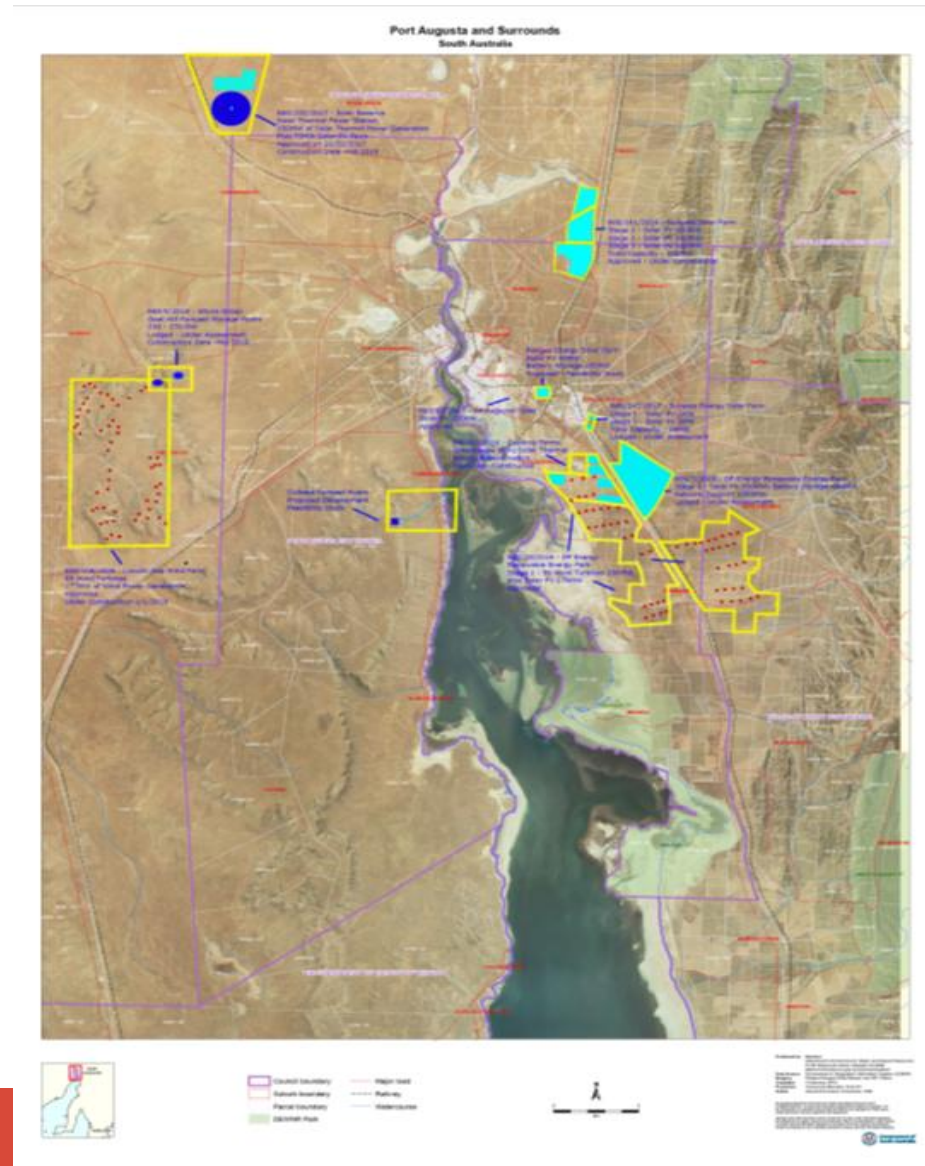








# Renewable Energy Projects



# Renewable Energy Projects

Company	Project Title	Details	Location
SolarReserve	Aurora Solar Energy Project	150 MW solar thermal tower with energy storage	30km North of Port Augusta
Altura Group	Goat Hill Pumped Storage Hydro Project	Closed Loop, off-river pumped hydro Mains Network – Morgan/Whyalla pipeline (potable quality)	Lincoln Gap
Arup/Energy Australia	Cultana Seawater Pumped Hydro Project	Pumped Hydro Energy Storage Facility	Shack Road
Reach Solar Energy	Bungala Solar Reserve Project	300MWac Solar Photovoltaic (PV) Project	On land leased from Bungala Aboriginal Corporation 12km from Port Augusta (Emeroo Station)
DP Energy	Port Augusta Renewable Energy Park	<p>Stage 1 - Combined wind &amp; solar photovoltaic (PV) farm. 59 Wind Turbines &amp; a series of Molar Modules, together with associated infrastructure to produce a total installed capacity of up to 375MW of clean renewable energy.</p> <p>Stage 2 - Solar PV Farm including Energy Storage &amp; Synchronous Condenser facilities. 5,000,000 solar PV modules, 500 solar PV inverter, up to 400MW of energy storage, up to 3000MW.s of synchronous condenser capacity facilities.</p>	12km South-East Port Augusta
Pangea Energy Pty Ltd	Pangea Project	50MW Solar Photovoltaic capacity and up to 300Mwh Battery Storage capacity	Lot 350 Paltridge Avenue Stirling North

# Renewable Energy Projects

Alinta Energy & Trustpower Consortium	Solar PV Renewable Energy Project	Solar PV Power Plant	Port Augusta Power Station Site
ZEN Energy & Santos Partnership	Large Scale Battery Storage Project	Solar and battery storage with natural gas-based generation	
Nexif Energy	Lincoln Gap Wind Farm	Wind Farm - 59 Senvion Wind Turbines 212 Megawatt Next phase: 10MW Grid Scale Battery Storage	15km west of Port Augusta Lincoln Gap
Solastor	Solastor	Concentrated Solar Power & Storage Utilising Graphite Technology	
Surpass Energy Pty Ltd (trading as SSE Australia)	Woolundunga Solar Farm Pty Ltd	Stage 1 – Fixed Tilt Solar Photovoltaic (PV) Farm of 5MW Capacity	Spear Creek Road
Scatec Solar (Norway) & Climate Mundial (UK/Australia)	Wilpena Solar Project	Large (500+MW) Scale Solar Photovoltaic (PV) Plant across the South Australia.	Wilpena
SIMEC ZEN Eerngy		120MW/140MWh Battery Storage Facility	